

**Welcome to the fourth issue of the netSPEAR newsletter.**

netSPEAR is an independent project hosted by the KEMRI / Wellcome Trust Collaborative Research Programme in Nairobi, Kenya. netSPEAR is funded by the **PneumoADIP** and **GAVI** and works closely with the **WHO / PBMS Project** and WHO regional offices. NetSPEAR aims to provide regional surveillance data on pneumococcal disease and other causes of meningitis and pneumonia that kill large numbers of African children every year. This information is essential for making decisions on the role of vaccines to prevent these diseases.



*Dr Tatu Kamau - Director  
Kenya Expanded Programme for  
Immunisation Opening the second network  
conference, 15<sup>th</sup> & 16<sup>th</sup> November 2004.*

We at netSPEAR want to take this opportunity to thank all the guest speakers and participants for making the meeting a success.

**Uganda Leads the Way!****St Marys' Hospital Lacor**

This hospital in Gulu admits approximately 1200-1600 children in a month. In the months Jan to Oct 2004, 1205 Lumbar punctures were carried out and 63 cultures were positive including 35 S. Pneumoniae and 5 H. Influenzae.

**Mbale Regional Referral Hospital**

Admits 1100 children per month. In the months Jan to Oct 2004, 239 lumbar punctures were carried out and 26 six cultures were positive including, 4 S. Pneumoniae and 2 H. Influenzae.

**Mbarara University Teaching Hospital**

Admits about 500 children in a month. In Jan to Oct 2004 a total of 194 lumbar punctures were carried out and 27 cultures were positive. The organisms isolated included 15 S. Pneumoniae and 4 H. Influenzae.

**Mulago National Referral Hospital, Kampala**

Admits about 1200 children per month and does about 100 LPs per month. In the months Jan to Oct 2004 14 S. Pneumoniae, 25 H. Influenzae and 28 other organisms were isolated.

**Kenyan Performance Patchy****Machakos District Hospital**

Admits 200 children per month. During the period January - October this year, twenty-two lumbar punctures have been carried out and two cultures were positive and one of the organisms identified was S. Pneumoniae.

**Kenyatta National Hospital**

Admits about 1200 children a month. In the months of Jan to Dec 2004, a total of 458 lumbar punctures were carried out on children. Forty-one cultures were positive and out of the positive cultures 12 were identified as S. Pneumoniae and 11 organisms were identified as H. Influenzae.

**PGH Nakuru**

Admits over 600 paediatric cases in a month. In the months of Jan to Oct 2004 68 lumbar punctures were carried out on children, one was positive and the organism was S. Pneumoniae.

**PGH Nyeri**

Admits on average 450 children in a month. During the period Jan to Oct 2004, 280 lumbar punctures were done and twenty-four cultures were positive, six were identified as S. Pneumoniae and one positive H. Influenzae.

**PGH Embu**

Admits about 250 children per month. During the period Jan to Oct 2004, 18 lumbar punctures have been carried out.

**Moi Teaching and Referral Hospital (MT&RH)**

Admits approximately 200 to 250 children per month. In the months of Jan to Oct 37 lumbar punctures were carried on children.

**Kilifi District Hospital**

Approximately 420 children are admitted to the ward per month. In the months of Jan to Oct 2004, 504 lumbar punctures were carried out and 27 cultures were positive. The organisms identified include 13 S. Pneumoniae, 2 H. Influenzae and 2 H. Influenzae.

## Tanzania getting started

### Hospitali Teuli, Muheza

During the first half of 2004, 84 LPs were carried out and 19 cultures were positive. Organisms isolated included 4 S. Pneumoniae and 4 H. Influenzae.

### Muhimbili National Hospital

Admits about 1250 children in a month. In the months Jan to Oct 2004 a total of 250 lumbar punctures were carried out and 24 cultures were positive. The organisms isolated included 4 S. Pneumoniae and 1 H. Influenzae.

Feel free to ask for more information or send netSPEAR your news via:

[networkmanager@netspear.org](mailto:networkmanager@netspear.org)

or visit the website at:

[www.netspear.org](http://www.netspear.org)

netSPEAR is funded by

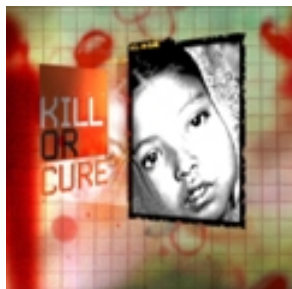
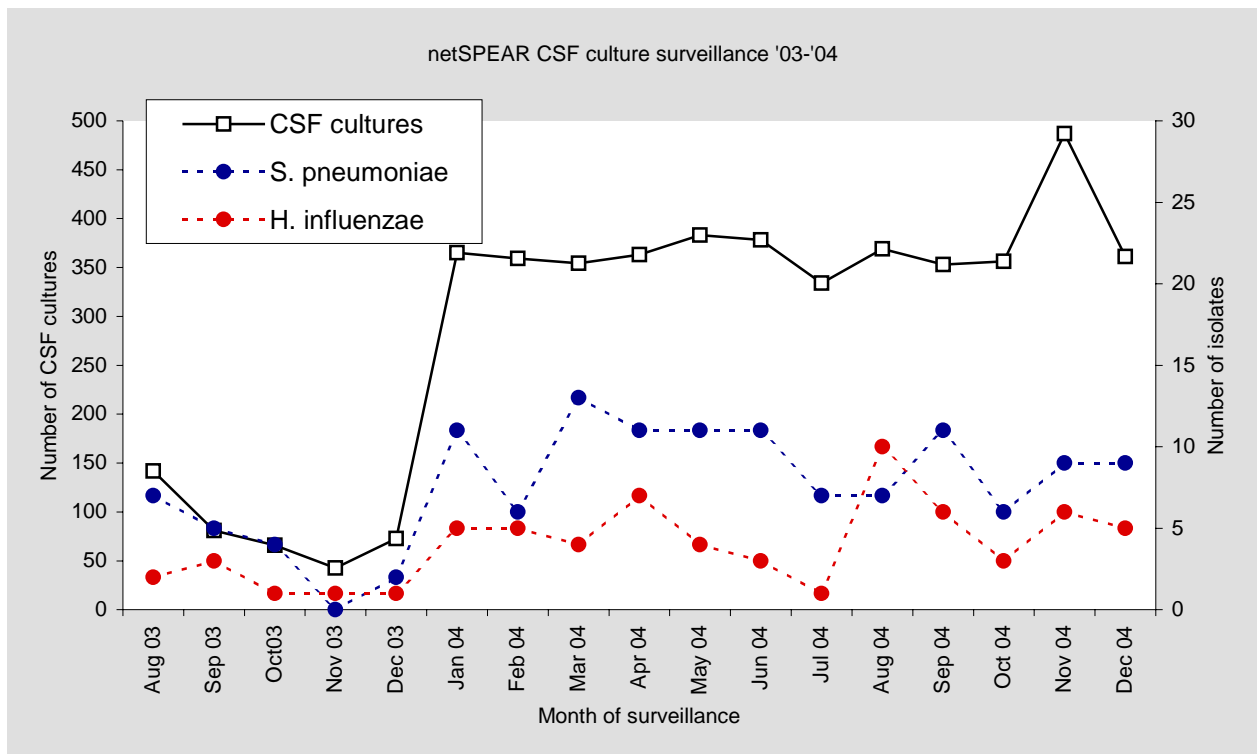
## Ethiopia support beginning

### Tikur Anbessa Hospital, Addis Ababa

Admits about 400 children per month and from Jan to Oct 2004 107 LPs were performed with 7 S. Pneumoniae and 11 H. Influenzae.



## **This is how things look putting all the Lumbar Puncture Data together for 2004**



Did you get a chance to see netSPEAR as part of the BBC Documentary ' Kill or Cure' on Pneumococcal Disease. If you would like a DVD copy of this programme please email: [bw.netspear@wtairobi.mimcom.net](mailto:bw.netspear@wtairobi.mimcom.net)